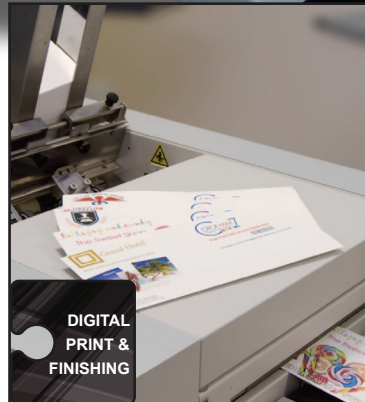


FORMAX[®]

FIND YOUR SOLUTION HERE

Pressure Seal • Mailing • Data Destruction • Digital Print & Finishing





AutoSeal® Pressure Sealers	3-5
Production Pressure Sealers	6
Inserters	7-10
Document Folders	11-13
MailDoc Software / Envelope Opener / Document Signer	14
Cut-Sheet Cutter / Cut-Sheet Burster / Bursters	15
Paper & Envelope Joggers	16
Tabbing Systems	17
Conveyors / Vertical Stacker	18
Digital Color Printers & Software	19-21
Creasers / Perforators	22-23
Cut-True Guillotine Cutters	24-25
Card Cutters / Booklet Maker / Booklet Finisher	26
Shredders	27-33

Founded in 1987, Formax is an industry leader in the design, engineering, sales and support of pressure seal, mailing, digital print & finishing and data destruction equipment. Formax specializes in equipment to streamline paper and mail flow in organizations of all sizes and vertical markets, from Fortune 500 companies to schools and municipalities.

Formax markets a wide range of products including our patented AutoSeal® pressure sealers to process one-piece mailers, inserters, paper folders and commercial-grade shredders, as well as an array of complementary products including MailDoc™ software, a full line of ColorMax Digital Printers and cmColor RIP and Color Matching Software, Cut-True Cutters, bursters, signers, envelope openers, booklet makers, joggers and tabbing systems.

The Formax product line is proudly offered through a dealer network across the United States and around the world.

PRESSURE SEAL SOLUTIONS





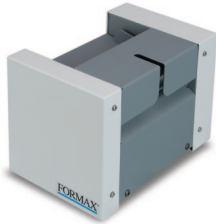
Formax AutoSeal® Pressure Sealers transform pressure-sensitive one-piece mailers into secure, sealed mail-ready pieces. Various models are available for specific needs including: Hand-Feed, Low, Medium and High-Volume Tabletop, In-Line, Stand-Alone and High-Volume Production.



User-friendly Control Panel



Redesigned fold plates - Clearly marked and easier to adjust



FD 1000 Single-Form Hand-Feed

Hopper Capacity:	Single folded form
Speed:	Up to 24 pre-folded forms per minute, based on 8.5" form width
Form Size:	Up to 5.5" wide (folded dimensions)
Features:	Simple operation, compact design



FD 1202 Low-Volume Tabletop

Hopper Capacity:	Up to 160 forms 20#
Fixed Speed:	Up to 38 forms per minute, based on 11" Z-fold
Paper Size:	Up to 8.5" W x 14" L
Features:	Drop-in feed system, compact tabletop design, 14" form length



FD 1402 / FD 1502 Low-Volume / Mid-Volume Tabletop

	FD 1402	FD 1502
Hopper Capacity:	Up to 160 forms 20#	Up to 200 forms 20#
Fixed Speed:	Up to 73 forms per minute, based on 11" Z-fold	Up to 100 forms per minute, based on 11" Z-fold
Paper Size:	Up to 8.5" W x 14" L	Up to 8.5" W x 14" L
Features:	Both: Drop-in feed system, 14" form length, six-digit counter, uneven custom folds, LED indicator, static eliminator FD 1502 only: extended fold plate for uneven "C" folds	
Options:	Cabinet, 18" conveyor, reverse stacking conveyor, 402 Series Jogger	



FD 1502 Plus Mid-Volume with Integrated Conveyor

Hopper Capacity:	Up to 200 forms 20#
Fixed Speed:	Up to 6,250 forms per hour
Paper Size:	Up to 8.5" W x 14" L
Features:	Integrated conveyor, drop-in feed system, 14" form length, counter, uneven custom folds, LED indicator
Options:	Cabinet, 402 Series Jogger



Pressure seal mailers have narrow bands of pressure sensitive adhesive which create a complete and secure seal when processed through AutoSeal equipment. They're laser printer compatible and provide a simple, streamlined solution for virtually all businesses regardless of size or type. The forms are printed on a laser or impact printer, then taken to the AutoSeal pressure sealers to be folded and sealed.

Fold: Letter
Paper Size: 8.5" x 11"
Count: 000384
Speed: 100% → Menu

Large LCD Screen



Removable Feed Wheels



FD 2002 / FD 2032 Mid-Volume / High-Volume Tabletop



Shown w/optional 18" conveyor

	FD 2002	FD 2032
Hopper Capacity:	Up to 250 forms 24#	Up to 350 forms 24#
Fixed Speed:	Up to 8,000 forms per hour	Up to 11,000 forms per hour
Paper Size:	Up to 8.5" W x 14" L	Up to 8.5" W x 14" L
Features:	Drop-in feed system, 14" form length, uneven custom folds, six-digit counter, LED indicators, noise reduction	
Options:	Cabinet, 18" conveyor, reverse stacking conveyor, 402 Series Jogger	

FD 2054 High-Volume with Automatic Fold & Form Length Settings



Hopper Capacity:	Up to 500 forms 20#
Variable Speed:	Up to 16,450 forms per hour, based on 11" Z-fold
Paper Size:	Up to 12.25" W x 18" L
Features:	Large LCD control panel, integrated telescoping conveyor, 11 automatic fold settings, stores up to 35 custom folds, AutoStack™ wheels, 17" form capability, automatic paper length settings, drop-in feed system, six-digit addition and batch counter, removable roller cover, easy-off feed wheel shaft, adjustable feed table pressure, standard fold setting customization
Options:	Cabinet, V-Stack36 vertical stacker, 402 Series Jogger

FD 2002IL In-Line Tabletop System with Laser Printer



FD 2002IL System shown with Pressure Sealer & Alignment Base, laser printer (not included), optional cabinets and 18" conveyor

Hopper Capacity:	Printer Dependent (printer not included)
Speed:	Printer Dependent
Paper Size:	Up to 8.5" W x 14" L
Features:	Print, fold & seal in one step, enclosed paper path for document security, automatic fold settings, six-digit counter, easy to install with alignment base (included), 11" & 14" form length, LED indicators, fault detector
Options:	2 cabinets, 18" conveyor



FD 2096 Mid-Volume Production

Ideal for mid-volume processing of cut-sheet pressure seal forms. Bottom-suction air feed system provides accurate feeding and allows for continual loading of forms. Quick and easy set-up, rugged metal fold plates, a 6-digit resettable counter, and integrated 24" outfeed conveyor make it very user-friendly.

Hopper Capacity:	Up to 350 forms 24#
Variable Speed:	Up to 30,000 forms per hour
Paper Size:	Up to 12" W, up to 17" L
Features:	Top-loading bottom air feed deck, variable speed control, 24" outfeed conveyor, 6-digit resettable counter, sound-reducing insulated fold plate covers, rotating air suction drum for accurate feeding, ball transport deck between folder and sealer, adjustable stacking wheels, safety interlocks, fault detectors, static eliminator, casters for easy transport
Power:	120V 60Hz, 30Amp
Options:	402 Series jogger, center slitter kit, V-Stack36 vertical stacker



FD 2200-10 Stand-Alone Pressure Sealer

Specially designed for use with various high-production floor model folders. Integrates easily, and can be removed for non-pressure seal applications.

Speed:	Fixed speed of 40,000 forms per hour
Paper Size:	Up to 11.5" wide
Dimensions:	25" W x 24" L x 38.5" - 39" H
Weight:	180 lbs.
Features:	Precision ground clutching four-roller system, 8-ball transport deck between fold rollers and sealer, three interface connections, safety cover interlock, heavy-duty casters, mounting bracket, fault detection, static eliminator, plexi-cover



2200 Series High-Volume Production

Four models are available, each with automatic fold setting adjustments and capacity of up to 40,000 forms per hour and unlimited monthly duty cycle. **FD 2200** air feed, **FD 2200-EX** extended air feed system, **FD 2250** pile-loader in-feed, and **FD 2280** with in-line FD 676 Industrial Burster.

Hopper Capacity:	FD 2200 - up to 500 forms 24# FD 2200-EX - up to 1,000 forms 24# FD 2250 - up to 3,500 forms 24# *
Variable Speed:	Up to 40,000 forms per hour, based on 11" Z-Fold
Paper Size:	FD 2200/2250/2280: Up to 11.5" W x 25" L FD 2200-EX: Up to 11.5" W x 14" L
Power:	220V, three phase, 20 Amp (Special 3-phase power required)
Features:	Automatic fold settings, extendable output conveyor, jam detection, addition and batch counter, static eliminator, safety interlocks
Options:	V-Stack36 vertical stacker, 402 Series jogger



FD 2200



FD 2200-EX



FD 2280

*Capacity of up to 3,500 non-windowed forms. Forms with a traditional patch window are better suited for the FD 2200 and FD 2200-EX.

U.S. Patents 5,772,841 5,865,925 5,968,308 6,264,592 Other patents pending.

MAILING SOLUTIONS



Formax Inserters automate the tedious task of folding and inserting documents into envelopes. Leading-edge technology provides a flexible, dependable, cost-effective solution for your organization's document and mail flow.



User-friendly color touchscreen control panel



Optional side exit tray



FD 6102 Low-Volume Desktop Inserter

Feeders:	Up to 100 sheets each (20#)
Envelope Hopper:	Up to 100 envelopes
Fixed Speed:	Up to 1,360 pieces per hour
Duty Cycle:	Up to 5,000 per month
Features:	2 fully-automatic sheet feeders, 1 automatic insert/BRE feeder, fully automatic adjustments, color touchscreen display, 14" sheet capability, 15 programmable jobs, resettable and non-resettable counters, seal and non-seal capabilities, double document detection, adjustable catch tray for #10 and 9.5" envelopes

6204 Series Low-Volume Desktop Inserters

Feeders:	Up to 325 sheets each or approximately 45 BREs
Fixed Speed:	Up to 2,200 pieces per hour
Duty Cycle:	Up to 15,000 per month
Features:	Available in 4 configurations, color touchscreen display with job wizard set-up guides, AutoSet™ one-touch set-up, 15 programmable jobs, daily mail station, seal/non-seal and fold-only capabilities, resettable and non-resettable counters, folds/inserts up to 5 sheets
Options:	OMR up to 5 sheets (FD 6204-Adv 2 only), front/rear side exit tray, short feed trays, cabinet, 402 Series Joggers



Programmable jobs, color touchscreen displays, AutoSet™ one-touch setup, and optional OMR and BCR are all part of the user-friendly interface.



High-Capacity Envelope Hopper



Graphical On-Screen Display with Paper Presence Sensors



FD 6306-Standard 3 with High-Capacity Vertical Output Stacker

6306 Series Mid-Volume Desktop Inserters

Standard Feeders:	Up to 325 sheets each
High-Capacity Feeder:	Up to 725 sheets, 20# bond
Envelope Hopper:	Up to 400 envelopes, top-loading
Fixed Speed:	Up to 3,800 pieces per hour
Duty Cycle:	Up to 40,000 pieces per month
Vertical Output Stacker:	Up to 500 filled envelopes, reverse stacking output
Features:	Available in 6 configurations, fully-automatic adjustments, 7" color touchscreen control panel with paper and envelope presence sensors, high-capacity vertical stacker, 50 programmable jobs, AutoSet™ one-touch set-up, folds/inserts up to 10 sheets (half-fold) or up to 8 sheets (tri-fold), daily mail station, seal/non-seal and fold-only capabilities, production feeder, ECO mode, resettable & non-resettable counters, OMR, 1D-2D BCR



6404 Series, with High-Capacity Document Feeder, two optional Short Feed Trays, and High-Capacity Production Feeder

6404 Series Mid/High-Volume Modular Desktop Inserters

Feeders:	Up to 325 sheets each or approximately 45 BREs
Envelope Hopper:	Up to 325 envelopes, top loading
Vertical Output Stacker:	Up to 500 filled envelopes, reverse stacking output
Fixed Speed:	Up to 4,000 pieces per hour, #10 envelopes
Duty Cycle:	Up to 60,000 per month
Features:	Available in 10 configurations, from 2 to 6 feeders, high-capacity reverse-output vertical stacker, color touchscreen control panel, AutoSet™ one-touch set-up, 25 programmable jobs, cascade mode, daily mail station, resettable and non-resettable counters, seal/non-seal and fold-only capabilities, folds/inserts up to 10 sheets at once, capable of inserting top/middle/bottom-address documents into top-flap envelopes, water level alert



6606 Series shown with High-Capacity Document Feeder, optional Thin Booklet Feeder and two Production Feeders

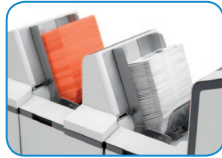
6606 Series Mid/High-Volume Modular Desktop Inserters

Feeder Capacity:	Up to 325 sheets each or approximately 45 BREs
Envelope Hopper:	Up to 500 envelopes, top loading
Vertical Output Stacker:	Up to 500 filled envelopes, reverse stacking output
Fixed Speed:	Up to 4,300 pieces per hour, #10 envelopes
Duty Cycle:	Up to 80,000 per month
Features:	2 to 7 feeders, adjustable 10.4" graphical color touchscreen, 50 programmable jobs, vertical output stacker, paper/envelope presence sensors, 725-sheet high-capacity feeder, cascade mode, daily mail mode, AutoSet™ one-touch set-up, seal/non-seal/fold-only, handles envelopes up to 6.4" H x 9.8" W, folds up to 10 sheets, inserts top/middle/bottom address documents, full-page code scanning

From the high capacity feeders and alternating feed trays, to the automatic sheet diverter and the high capacity envelope output conveyor, the 7102/7102XT Series and 7200 Series deliver the high speed, advanced functionality and perfect performance you need.



15" Color Touchscreen Interface



High-Capacity Versatile Feeders



FD 7102XT Standard 2F

7102 & 7102XT Series High-Volume Modular Inserter

	7102 Series	7102XT Series
Tower Feeder	Standard 1F: One 1,000-sheet feeder	Standard 1F: One 1,000-sheet feeder
Sheet Capacity:	Standard 2F: One 500 & one 1,000-sheet Standard 3: Three 500-sheet feeders	Standard 2F: One 500 & one 1,000-sheet Standard 3: Three 500-sheet feeders
Envelope Hopper:	Up to 400	Up to 800
Fixed Speed:	Up to 4,500/hour (1 sheet, letter fold)	Up to 5,500 (1 sheet, letter fold)
Duty Cycle:	Up to 150,000 per month	Up to 180,000 per month
Features:	Modular design, 15" color touchscreen, automatic job setup, unlimited programmable jobs, folds up to 8 sheets at once, accumulation/divert deck, high-capacity output conveyor, reads all code types, daily mail, custom cabinets, data logging software	
Options:	Insert feeders, intelligent feeders, feeder folders, BRE feeder, envelope catch tray, output sorter	

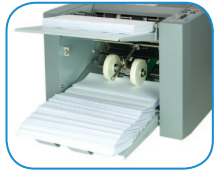
7200 Series High-Volume Modular Inserter

Tower Feeder	Special 1F: One 1,000-sheet Flex-Feeder
Sheet Capacity:	Special 2: Two 500-sheet Flex-Feeders Special 2F: Two 1,000-sheet Flex-Feeders Special 3F: Two 500-sheet Flex-Feeders on top and one 1,000-sheet Flex-Feeder on bottom Special 4: Four 500-sheet Flex-Feeders
Versatile Feeder	Up to 1,000 sheets 20#
Sheet Capacity (opt):	Up to 250 2.4mm booklets
Envelope Hopper:	Top-loading, up to 800 standard envelopes or 500 flat envelopes (landscape orientation)
Fixed Speed:	Up to 4,800/hour, #10 envelopes
Duty Cycle:	Up to 200,000 pieces per month
Features:	Modular design from 1 to 11 feeders, 15" color touchscreen interface, automatic job setup, inserts into flats (landscape orientation), unlimited programmable jobs, inserts sets of up to 50 sheets, folds up to 8 sheets at once, cascade mode, accumulation/divert deck, high-capacity output conveyor, reads all code types, air assist insertion, daily mail mode, custom cabinets
Options:	High-capacity versatile feeders, intelligent feeders, various OMR and BCR options, data logging software, 402 Series Joggers



FD 7200-Special 4 with four 500-sheet feeders and custom cabinets

Folding documents has never been easier! With a variety of models to choose from, you can automate any size folding job, from entry-level to high production.



Output conveyor for neat & sequential stacking



LCD control panel with resettable counter



Clearly marked fold plates for quick and easy setup



FD 300 Office Desktop Folder

Hopper Capacity: Up to 200 sheets 20# (75gsm)

Fixed Speed: Up to 7,400 sheets per hour

Paper Size: Up to 8.5" W x 14" L

Paper Weight: Up to 30# (112gsm)

Features: Clearly marked fold plates, pre-marked for four popular folds, output conveyor with adjustable stacker wheels, LCD control panel with 3-digit resettable counter, AutoBatch for processing sets, drop-in feed system, quick set-up with push-button operation, compact desktop design

Options: 402 Series Jogger



FD 314 Office Desktop Folder

Hopper Capacity: Up to 250 sheets 20# (75gsm)

Fixed Speed: Up to 7,700 sheets per hour

Paper Size: Up to 8.5" W x 14" L

Paper Weight: Up to 30# (112gsm)

Features: Clearly marked fold plates, pre-marked for four popular folds, output conveyor with adjustable stacker wheels, LCD control panel with 3-digit resettable counter, AutoBatch for processing sets, drop-in feed system, quick set-up with push-button operation, compact desktop design

Options: 402 Series Jogger



FD 322 Tabletop Folder with Manual Fold Settings

Hopper Capacity: Up to 250 sheets 20#

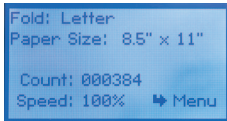
Variable Speed: Up to 11,000 sheets per hour

Paper Size: Up to 11 3/4" W x 18" L

Features: Drop-in feed system, clearly-marked fold plates, manual and custom fold settings including C, Z, Half, Gate, Fold Out and Double Parallel, variable speed, outfeed conveyor with adjustable stacker wheels

Options: Cabinet, 402 Series Jogger

Formax folders offer feature-rich design and ease of operation. Features include a drop-in feed system, telescoping conveyor system, standard and custom folds, and user-friendly control panels. Formax folders deliver speeds of up to 27,500 sheets per hour with fully automatic settings.



Large LCD Screen



Multi-Sheet Feeder

FD 342 Tabletop Folder with Manual Fold Settings



FD 342 Control Panel

Hopper Capacity:	Up to 500 sheets 20#
Fixed Speed:	Up to 15,500 sheets per hour, based on 11" Z-Fold, 6 Settings
Pre-Marked Paper Sizes:	11", 14", 17"
Paper Size:	Up to 3.5" - 12.25" W x 5" - 18" L
Features:	Six programmed fold settings, 6-digit resettable counter, batch counter, custom fold settings, fault detection, fine-tune adjustment, quick-release fold stops, adjustable stacker wheels, self-centering side guides
Options:	Multi-sheet feeder, cabinet, 402 Series Jogger



FD 382/FD 38X Control Panel

FD 382 Tabletop Folder with Automatic Fold & Form Length Settings

Hopper Capacity:	Up to 500 sheets 20#
Variable Speed:	Up to 20,100 sheets per hour, based on 11" Z-Fold, 6 Settings
Custom Folds:	Stores up to 25 custom folds into memory
Pre-Set Paper Sizes:	11", 14", 17"
Paper Size:	Up to 3.5" - 12.25" W x 5" - 18" L
Languages:	English, Spanish, French, German, Italian, Dutch
Features:	LCD control panel, 6 programmed fold settings, 6-digit resettable counter, AutoBatch, stores up to 25 custom folds, fault detection, fine-tune adjustment, cross folding, adjustable stacker wheels, self-centering side guides, six languages
Options:	Multi-sheet feeder, short fold/small document kit, cabinet, 402 Series Jogger

FD 38X Tabletop Folder with Fully Automatic Settings



Hopper Capacity:	Up to 500 sheets 20#
Variable Speed:	Up to 20,100 sheets per hour, based on 11" Z-Fold, 6 Settings
Stacker Wheels:	Automatic
Custom Folds:	Stores up to 35 custom folds into memory
Paper Size:	Up to 3.5" - 12.25" W x 5" - 18" L
Languages:	English, Spanish, French, German, Italian, Dutch
Features:	Includes all FD 382 features, plus AutoStack™ fully automated stacker wheels, multi-sheet feeder for up to 4 stapled sheets, adjustable feed table pressure for thick and thin stocks, fold plate locks, stores up to 35 custom folds
Options:	Cabinet, 402 Series jogger, V-Stack36 vertical stacker



ATLAS Air-Feed Document Folder

Hopper Capacity: Up to 500 sheets, 22# bond

Speed: Up to 27,000 per hour *

Paper Size: Min: 5.8" L x 5.5" W (3.7" with optional narrow sheet attachment)
Max: 25.5" L x 14.3" W

Paper Weight: Min: 16# bond
Max: 90# cover (variable, based on material and grain direction)

Pre-set Folds: 6 popular fold types in letter, legal and ledger sizes

Power: 220V, 50/60Hz

Features: Air suction feed table handles coated/non-coated stock, low-pressure air chamber to control curled paper, batch counter, dial-a-fold settings with LED display accurate to 0.1mm, belt-driven outfeed stacker, perf/score attachment, skew and micro adjustments, double document detector, fully-enclosed fold plates for sound reduction, durable fold rollers

Options: Narrow sheet guide attachment, 56-tooth perforating wheel, perforating anvil, light scoring wheel, heavy scoring wheel, scoring anvil, additional perforating / scoring wheel assembly, FD 402TA1 / FD 404A1 Air Joggers



Perforation / score attachment, included

* Speed varies depending on paper weight



ATLAS-AS Automatic Air-Feed Document Folder

Hopper Capacity: Up to 500 sheets, 22# bond

Speed: Up to 27,500 per hour *

Paper Size: Min: 6.2" x 5.5" (3.7" with optional narrow sheet attachment)
Max: 26.5" x 14.3"

Paper Weight: Min: 16# bond
Max: 90# cover (variable, based on material and grain direction)

Custom Folds: Unlimited

Power: 220V, 50/60Hz

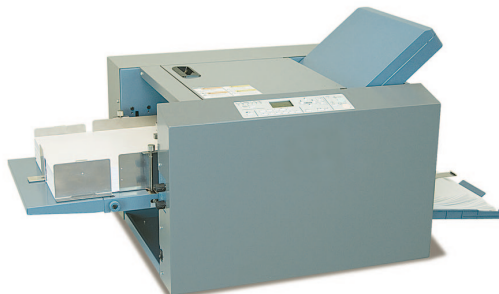
Features: Air suction feed table handles coated/non-coated stock, 7" color touchscreen control panel, low-pressure air chamber to control curled paper, batch counter, set and adjust folds with control panel, belt-driven outfeed stacker, perf/score attachment, skew and micro adjustments, double document detector, fully-enclosed fold plates for sound reduction, durable fold rollers

Options: Narrow sheet guide attachment, 56-tooth perforating wheel, perforating anvil, light scoring wheel, heavy scoring wheel, scoring anvil, additional perforating / scoring wheel assembly, FD 402TA1 / FD 404A1 Air Joggers



Color touchscreen control panel

* Speed varies depending on paper weight



FD 3200 Control Panel

FD 3200 Tabletop Air-Suction Folder with Automatic Settings

Hopper Capacity: Up to 625 sheets

Variable Speed: Up to 15,600 sheets per hour

Stacker Wheels: Automatic

Pre-Set Folds: C, Z, Half, Fold Out, Gate, Double Parallel

Custom Folds: Stores up to 20 custom folds into memory

Paper Size: Up to 4.73" - 12.24" W x 7.17" - 18" L

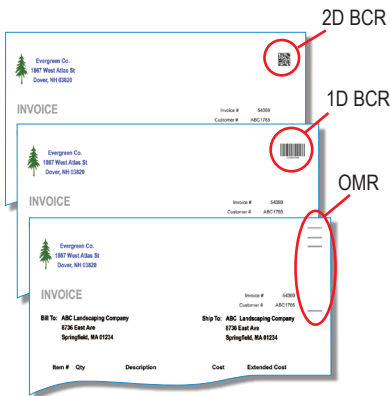
Paper Weight: Up to 230gsm

Features: Air suction feed system, control panel with LCD display, automatic paper size detection, automatic fold plate setting, adjustable air flow, optical double feed detection, batch counting, automatically adjusting outfeed stacker wheels, standard cross-folding unit, four-digit counter, insulated for noise reduction, fault detection, energy saving mode

Options: Side air kit, 402 Series Jogger

MAILDOC™ Document Management Software

Formax MailDoc™ is a powerful, easy-to-use software suite that generates Optical Mark Recognition (OMR), 1D and 2D Barcode Recognition (BCR) marks directly on documents. This provides intelligent inserting of varying multi-page documents such as invoices and statements. MailDoc™ also allows you to fully utilize a Formax inserter equipped with OMR or BCR through enhanced security, target marketing with selective feeding and diverting of sets based on selected criteria. Two versions are available, Beginner and Professional. The optional Postal Module increases savings by running addresses through CASS, PAVE list management software using NCOA for list certification.



Invoices or Statements are simply exported and saved in one PDF file. No integration is needed with your existing accounting software.

Select OMR or BCR mark functions and location of marks. Create templates for each recurring job for quick and efficient processing.

Documents are printed at any speed from MailDoc with OMR or BCR marks ready for intelligent insertion.

Formax inserters provide secure, automated insertion of documents.



FD 452 Envelope Opener

Fixed Speed:	Up to 300 envelopes per minute
Envelope Size:	5.5" - 13" H x 3.5" - 10.2" W
Envelope Thickness:	Up to 4 mm
Catch Tray Capacity:	Up to 80 #10 envelopes
Features:	Chadless cutting, handles mixed mail without pre-sorting, support arm for large envelopes, counter
Options:	402 Series Envelope Jogger



FD 150 Cut-Sheet Document Signer

Hopper Capacity:	Up to 200 sheets 20#
Fixed Speed:	Up to 300 pieces per minute
Paper Size:	2.75" - 14" W x 3" - 14" L
Features:	Dual key locks, resettable and non-resettable counter, four programmable jobs
Options:	Tri-color and ultraviolet ink roll, 402 Series Jogger

Formax Bursters make easy work of separating single or multi-part continuous forms. From low-volume to high-volume industrial needs, the Formax burster line can accommodate a wide variety of single or multi-part bursting applications at speeds of up to 500 feet per minute. The FD 574 Cut-Sheet Cutter is uniquely designed to process forms generated from a digital printer.



FD 574 Cut-Sheet Cutter

Hopper Capacity:	Up to 500 sheets 64gsm
Variable Speed:	Up to 2,640 sheets per hour (1 or 2 cuts - 11" sheet)
Paper Size:	4" - 14.5" W x 4" - 18" L
Features:	Guillotine cutter, 100 programmable custom settings, six pre-programmed settings, counter, safety interlocks, top-loading feed system
Options:	Slitters, perforators, conveyor, 402 Series Jogger



FD 4170 Cut-Sheet Burster

Hopper Capacity:	Up to 400 sheets 20#
Variable Speed:	5-level speed adjustment: 42, 64, 89, 114, 140 sheets per minute
Paper Size:	4" - 11" W x 5" - 17" L
Paper Weight:	13# bond - 110# index
Features:	4-digit LCD counter, three-tire top-loading system, programmable job settings, pre-programmed cut settings for 11", 14" and 17" paper, adjustable side guides for different form lengths, last job memory
Options:	402 Series Jogger



FD 550 Low-Volume Burster

Variable Speed:	0 - 200 ft per minute
Paper Size:	2.375" - 16" W x 2.75" - 12" L
Features:	Tractors, slitters, safety interlocks, conveyor, cabinet
Options:	Center slitter, power drop stacker, and other custom options



FD 666 Mid-Volume Burster

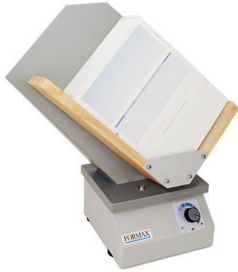
Variable Speed:	30 - 350 ft per minute
Paper Size:	2.375" - 16" W x 2.75" - 17" L
Features:	Tractors, slitters, cabinet, safety interlocks, conveyor
Options:	Imprinter, power drop stacker, and other custom options



FD 676 & FD 680 High-Volume Bursters

Variable Speed:	30 - 500 ft per minute
Paper Size:	2.75" - 17" (19.25" slitting) W x 2.75" - 17" L
Features:	Tractors, slitters, cabinet, safety interlocks, conveyor
Options:	Imprinter (standard on FD 680), power drop stacker, merger and other custom options

Virtually any piece of equipment which processes cut-sheet paper, forms or envelopes can be enhanced by using a 402 Series Jogger. Each has the ability to align and separate forms, paper, or envelopes for accurate feeding, while reducing heat and static electricity caused by laser printers.



FD 402P1 Single-Bin Paper Jogger

Variable Speed: Up to 4,000 vibrations per minute

Bin Capacity: Up to 800 sheets 20#

Bin Size: 3.5" D x 8.75" W x 15.5" L

Media Size: Up to 11" W x 17" L

Features: Single bin with center divider for improved small stack jogging, tilted rack, variable speed, solid state control for on/off/vibration speed, electromagnetic design for continuous operation



FD 402P3 Three-Bin Paper Jogger

Variable Speed: Up to 4,000 vibrations per minute

Bin Capacity: Up to 1,700 sheets 20#

Bin Size: 7" D x 2.25" W x 11.25" L each bin

Media Size: Up to 8.5" W x 14" L

Features: Three bins for high-volume applications, tilted rack, variable speed, solid state control for on/off/vibration speed, designed for continuous operation



FD 402E2 Two-Bin Envelope Jogger

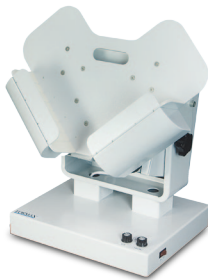
Variable Speed: Up to 4,000 vibrations per minute

Bin Capacity: Up to 1,750 sheets 20#

Bin Size: 2.5" D x 3.5" W x 10" L each bin

Media Size: Up to 4" W x 9.5" L

Features: Two bins for preparing incoming mail, aligning checks or statement stubs for further processing, tilted rack, variable speed, solid state control for on/off/vibration speed, electromagnetic design for continuous operation



FD 402TA1 Tabletop Air Jogger

Variable Speed: Up to 2,500 vibrations per minute

Bin Capacity: Up to 940 sheets 20#

Bin Size: 3.75" D x 20.375" W

Media Size: 5" x 7" min - 12" x 18" max

Variable Air Control: Up to 29,000 rpm

Features: Tilting V-shaped bin adjusts from horizontal to vertical, accommodates large format and crisscross stacked piles, three operating modes: air-and-vibrate, air-only, and vibrate-only



FD 404A1 High-Capacity Air Jogger

Variable Speed: Up to 3,000 vibrations per minute

Bin Capacity: Up to 940 sheets 20#

Bin Size: 3.75" D x 20.375" W x 13" L

Media Size: 5" x 7" min - 12" x 18" max

Variable Air Control: Up to 29,000 rpm

Features: Tilting V-shaped bin adjusts from horizontal to vertical, foot pedal control for two-handed loading and unloading, accommodates large format and crisscross stacked piles, 60-second countdown timer for unattended jogging, three operating modes: air-and-vibrate, air-only, and vibrate-only

The Formax FD 262 takes paper, translucent or clear tabs and gives you the advantage and cost savings of high-speed tabbing in one compact unit.

The FD 282 can do something that no other tabletop tabber on the market can do: apply tabs to opposite sides of a mailpiece or top & side of a mailpiece simultaneously.



Edge tabbing to both sides in one pass



FD 282HF: FD 282 with FD 282-10 Heavy Duty Feeder



FD 262 Single-Head Tabber

Speed:	Up to 12,000 pieces per hour (8.5" tri-folds)
Feeder Capacity:	Up to 200 tri-folds
Media Size:	3" to 18" L 5" to 17" W
Media Thickness:	Up to 5/32"
Tab Sensitivity Control:	Adjusts for density in tab/wafer seals
Tabs Applied:	1 tab per pass
Reel Capacity:	Up to 10,000 tabs Maximum roll diameter: 9" Core diameter: 3"
Features:	Integrated bottom feed for continuous operation, 5-digit LCD resettable counter

FD 282 Double-Head Edge Tabber

Speed:	Single Tab: Up to 25,000 pieces per hour (tri-folds) Double Tab: Up to 15,000 pieces per hour Triple Tab: Up to 10,000 pieces per hour (11" minimum piece length)
Feeder Capacity:	In-line design, capacity dependent on input device
Media Size:	3.5" to 15" L 5" to 11" W
Media Thickness:	Up to 1/4"
Tab Sensitivity Control:	Adjusts for density in tab/wafer seals
Tabs Applied:	1, 2 or 3 tab per pass
Reel Capacity:	Up to 11,000 tabs Maximum roll diameter: 9" Core diameter: 3"
Features:	Applies paper, clear or translucent tabs as well as USPS roll stamps, able to simultaneously tab top and side or opposite sides of mailpiece, control panel with LCD screen, lifetime and resettable counters, safety interlocks
Options:	FD 282-05 Feeder, FD 282-10 Heavy Duty Feeder, FD 282-20 Stand, Conveyor





CJ-10 Drop-Stacking Conveyor

Common Applications:	Low to medium-speed inkjet addressing systems
Internal Vacuum Fans:	None
Speed:	0-124 feet per minute
Belt:	Four, each 1" wide
Direction:	Left-to-right or right-to-left configurations
Drop Stack Capacity:	Up to 250 envelopes
Maximum Media Size:	Up to 9" W x 12" L



FD 4040 4-foot Bi-Directional Drop-Stacking Conveyor

Common Applications:	Medium to high-speed inkjet addressing systems
Bi-Directional:	Control panel module* can be rotated 180° to allow left-to-right and right-to-left transport
Internal Vacuum Fans:	Dual 170 cubic feet/minute tubeaxial fans
Speed:	30 - 350 feet per minute
Belt:	Single, perforated 12" wide
Drop Stack Capacity:	Adjustable from 5" - 11"
Maximum Media Size:	Up to 13.5" W x 15" L
Adjustable Height:	Floor to belt height adjusts from 28" - 35"
Options:	D1000 / D2000: 1,000 / 2,000 watt infrared dryers

* Patent pending

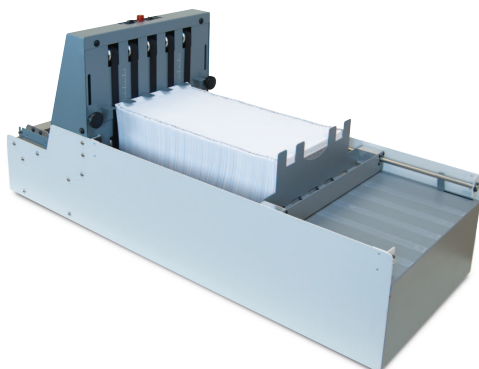


FD 4060 6-foot Bi-Directional Drop-Stacking Conveyor

Common Applications:	Medium to high-speed inkjet addressing systems
Bi-Directional:	Control panel module* can be rotated 180° to allow left-to-right and right-to-left transport
Internal Vacuum Fans:	Dual 170 cubic feet/minute tubeaxial fans
Speed:	30 - 350 feet per minute
Belt:	Single, perforated 12" wide
Drop Stack Capacity:	Adjustable from 5" - 11"
Maximum Media Size:	Up to 13.5" W x 15" L
Adjustable Height:	Floor to belt height adjusts from 28" - 35"
Options:	D1000 / D2000: 1,000 / 2,000 watt infrared dryers

* Patent pending

Shown with optional D2000 Infrared Dryer



V-Stack36 Vertical Stacker

Speed:	Variable, depending on input machine
Capacity:	Up to 22" of folded documents, approximately 1,500 sheets
Folded Form Dimensions:	Up to 7" H x 12" W
Compatibility:	Works with a variety of folders and pressure sealers, including FD 382, FD 38X, FD 2054, FD 2096, 2200 Series
Features:	Photo-eye activation, six-ball-roller deck, guide wheels, LED alert, vertical paper stop
Options:	Adjustable-height stand (required for use with FD 2096 and 2200 Series; optional for tabletop machines)

DIGITAL PRINT & FINISHING





The ColorMax line of Digital Color Printers offers a variety of printing options and includes the ColorMax7 and ColorMaxLP inkjet printers, and the toner-based ColorMaxT4, ColorMaxT5 and ColorMaxT6.

The ColorMax7 and ColorMaxLP produce full-color CMYK output, using the latest Memjet® technology and a print head with has 70,400 ink nozzles and no moving parts. The thermal ink-based ColorMax 7 and ColorMax LP offer faster printing, full-bleed capabilities, lower operating costs and the ability to print on standard windowed envelopes.

The dry toner based ColorMax T4, ColorMaxT5 and ColorMaxT6 offer a more durable print, thicker media options, consistency of color across substrates and the ability to print on larger formats.

The ColorMaxT5 has the unique ability to print CMYK plus White toner in a single pass. Using white toner allows users to print color-on-color and white-on-color. The ColorMaxT6 adds the ability to print Clear toner for stunning print enhancements, producing text and images that virtually pop right off the page.



ColorMax7 Digital Color Printer

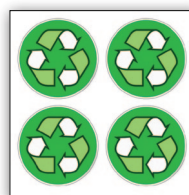
Speed, page printing:	Up to 3,600 per hour
Speed, #10 envelopes:	Up to 7,500 per hour
Duty Cycle:	30 million pieces, or 500,000 per month over a 5-year life cycle
Material Size:	Min: 3" W x 4.25" L Max: 9.5" W x 17" L
Material Thickness:	Up to 1/48" (0.5mm / 430 gsm / 160# cover / 240# index)
Print Quality:	Up to 1600 x 1600 dpi @ 6 inches per second, up to 1600 x 800 dpi @ 12 ips
Print Area:	Up to 8.5" x 17" with full bleed capability
Options:	3-foot conveyor stacker, 1,000 watt infrared dryer, adjustable cabinet, software

* Microsoft Office not supported



ColorMaxLP Digital Color Label Printer

Speed:	Up to 12 inches per second / 60 fpm
Label Media Width:	2" - 8.5" (50.8 - 216mm)
Label Sizes:	2" x 4", 4" x 6", 5" x 7", Custom
Maximum Label Length:	40" (1m) for roll-to-roll, 8" for roll-to-cut
Label Types:	Gloss, semi-gloss, matte
Label Detection:	Gap, continuous, black mark
Print Quality:	Up to 1600 x 1600 dpi @ 12 ips
Print Area:	Up to 8.5" x 17" with full bleed capability
Options:	Automatic roll-to-roll rewinder, color matching software, VDP, adjustable-height cabinet



COLORMAXT4 / COLORMAXT5 / COLORMAXT6 TONER-BASED DIGITAL COLOR PRINTERS



ColorMaxT4 Digital Color Printer

Output:	CMYK
Print Speed*, Color/Mono:	Up to 50ppm Letter, 27ppm Tabloid
Time to First Page:	Approx. 8 seconds
Duty Cycle:	Up to 300,000 pages/month
Print Resolution:	Up to 1200 x 1200 dpi ProQ: 1200 x 600 x 16 levels
Media Sizes:	12" x 18", 11" x 17", legal, letter, 3" x 5" index cards, A3, A4, A5, A6, B5, C5, DL, #10 envelopes, and banners (up to 13" x 52")
Media Weight:	52-360gsm
Media Capacity:	Multi-Purpose Tray (MPT): Up to 300 sheets Trays 1, 2, 3: Up to 530 sheets High-Capacity Feeder: Up to 1,590 sheets
Max Capacity:	Up to 2,950 sheets (w/MPT, 2 Trays and High-Capacity Feeder)
Media Output:	Conveyor or top exit
Warranty:	5-Year Digital LED Print Heads



ColorMaxT5 Digital Color Printer

Output:	CMYK plus White
Print Speed*, Color/Mono:	Up to 50ppm Letter, 27ppm Tabloid
Time to First Page:	Approx. 8 seconds
Duty Cycle:	Up to 300,000 pages/month
Print Resolution:	Up to 1200 x 1200 dpi ProQ: 1200 x 600 x 16 levels
Media Sizes:	12" x 18", 11" x 17", legal, letter, 3" x 5" index cards, A3, A4, A5, A6, B5, C5, DL, #10 envelopes, and banners (up to 13" x 52")
Media Weight:	52-360gsm
Media Capacity:	Multi-Purpose Tray (MPT): Up to 300 sheets Trays 1, 2, 3: Up to 530 sheets High-Capacity Feeder: Up to 1,590 sheets
Max Capacity:	Up to 2,950 sheets (w/MPT, 2 Trays and High-Capacity Feeder)
Media Output:	Conveyor or top exit
Warranty:	5-Year Digital LED Print Heads



ColorMaxT6 Digital Color Printer

Output:	CMYK plus White or Clear
Print Speed*:	Color/Mono: Up to 50ppm Letter, 27ppm Tabloid CMYK over White: Up to 45ppm Letter, 24ppm Tabloid CMYK plus Clear: Up to 17ppm Letter
Time to First Page:	Approx. 8 seconds
Duty Cycle:	Up to 300,000 pages/month
Print Resolution:	Up to 1200 x 1200 dpi ProQ: 1200 x 600 x 16 levels
Media Sizes:	12" x 18", 11" x 17", legal, letter, 3" x 5" index cards, A3, A4, A5, A6, B5, C5, DL, #10 envelopes, and banners (up to 13" x 52")
Media Weight:	52-360gsm
Media Capacity:	Multi-Purpose Tray (MPT): Up to 300 sheets Trays 1, 2, 3: Up to 530 sheets High-Capacity Feeder: Up to 1,590 sheets
Max Capacity:	Up to 2,950 sheets (w/MPT, 2 Trays and High-Capacity Feeder)
Media Output:	Conveyor or top exit
Warranty:	5-Year Digital LED Print Heads

* Based on letter-size sheets, simplex. Specifications may vary based on media size/weight, simplex/duplex printing, % of toner coverage.



Atlas Auto-Feeding Creasers are fully-automatic solutions to the problem of cracking in toner-based digital prints. The graphics-based 7" touchscreen control panel allows operators to easily set-up and save jobs in just minutes or utilize one of the pre-programmed settings. The C100 and C200 automatically calculate the crease positions based on paper size and set them accordingly. The powerful bottom-suction air-feed system allows for continuous loading of sheets, which increases productivity while maintaining accuracy, even with heavier stocks. Perforating capabilities are also standard, with a wide range of wheels to suit many different applications.



Uncreased folded digital prints (left) are cracked and give the appearance of poor quality. Creased prints (right) have no cracking and look polished and professional.



atlas C100

Atlas C100 High-Speed Automatic Creaser

Speed:	Up to 8,500 sheets per hour * (8.5" x 11") Up to 11,000 sheets per hour * (6.5" x 8.5")
Sheet Size:	Max: 27.5" x 12.9" Min: 8.2" x 5.5"
Paper Thickness:	Max: 0.015" (approx. 400gsm) Min: 0.004" (approx. 75gsm)
Creases per Sheet:	Up to 16
Minimum Repeat Crease Distance:	0.03" (depending on paper weight)
Minimum Crease Distance from Leading Edge:	0.09"
Minimum Crease Distance from Trailing Edge:	1.37"
Programmable Jobs:	Unlimited
Options:	Slitting and perforating wheels, narrow creasing matrix Lifetime guaranteed creaser matrix



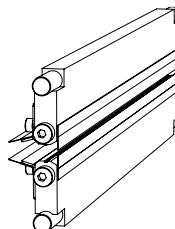
atlas C200

Atlas C200 High-Speed Automatic Creaser

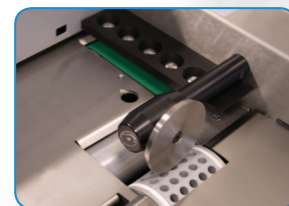
Speed:	Up to 8,500 sheets per hour * (8.5" x 11") Up to 11,000 sheets per hour * (6.5" x 8.5")
Sheet Size:	Max: 27.5" x 19.6" (35.4" x 19.6" w/optional extension table) Min: 8.2" x 5.5"
Paper Thickness:	Max: 0.015" (approx. 400gsm) Min: 0.004" (approx. 75gsm)
Creases per Sheet:	Up to 16
Minimum Repeat Crease Distance:	0.03" (depending on paper weight)
Minimum Crease Distance from Leading Edge:	0.09"
Minimum Crease Distance from Trailing Edge:	1.37"
Programmable Jobs:	Unlimited
Options:	Slitting and perforating wheels, narrow creasing matrix Lifetime guaranteed creaser matrix



Color touchscreen control panel



Heavy-duty creasing matrix



Bottom-suction air feed system

The Atlas C300 Automatic Creaser/Folder produces high-speed creasing and folding in a single pass. Sheets pass through the dynamic creasing matrix and the patented “floating knife” folding mechanism, which minimize marking of the digital printout. Speed is maintained, regardless of the number of creases: up to 9 sheets with 9 creases each can be produced in less than 9 seconds. Includes the same powerful, rugged features as the C100 and C200, and can be used as a stand-alone creaser, or as a perforator when creasing and folding are not required.

atlas C300

Atlas C100 High-Speed Automatic Creaser



Sheet is creased and ready for crack-free folding

Speed:	Up to 6,000 sheets per hour * (8.5" x 11.5")
Sheet Size:	Max: 27.5" x 15.1" (35.4" x 15.1" w/optional extension table) Min: 8.2" x 5.5"
Paper Thickness:	Max: 0.015" (approx. 400gsm) Min: 0.004" (approx. 75gsm)
Folds per Sheet:	Up to 2
Minimum Repeat Crease Distance:	1.57" (depending on paper weight)
Minimum Repeat Fold Distance:	2.75" (depending on paper weight)
Minimum Crease Distance from Leading Edge:	1.96"
Minimum Fold Distance from Leading Edge:	1.96"
Minimum Crease Distance from Trailing Edge:	1.96"
Minimum Fold Distance from Trailing Edge:	1.96"
Minimum Fold Length:	2.75"
Programmable Jobs:	Unlimited
Features:	Color touchscreen control panel, floating knife folding technology, pre-programmed for common creases/folds, single perforating kit, digital thickness gauge for accurate measurements
Options:	Extension tray, slitting and perforating wheels, ultra narrow creasing matrix, stacker tray
	Lifetime guaranteed creaser matrix

* Production speed varies based on material size and the number of creases per sheet

FD 215S Electric Paper Creaser



Creasing process:	Electric, push-button or hands-free foot pedal
Maximum paper width:	Up to 18" (457mm)
Minimum paper size:	5.75" (146mm)
Maximum paper weight:	Up to 18 pt cover
Minimum paper stop position:	1.8" (46mm)
Maximum paper stop position:	14.75" (375mm)
Width of crease:	.062" (1.6mm)
Depth of crease:	.019" (.5mm)



Choose either push-button or foot-pedal operation

FD 90 Rotary Perforator / Creaser



Speed:	Up to 6,800 per hour
Paper size:	Min: 5" W x 2.5" L (150 x 64mm) Max: up to 13.8" W x 19" L (350 x 483mm)
Recommended paper weight:	55 - 180 gsm (Note: 55 - 60gsm paper can be processed with optional guide strips) For creasing, optimal paper weight is 150gsm
Parallel perforations/creases per sheet:	Up to 5 in a single pass
Perforating wheel capacity:	Up to 5 (includes 2 perforating tools and 1 creasing wheel)
Feed table capacity (max. stack height):	1.18" (30mm)

Cut-True Cutters combine ease of use, accuracy and the highest standard of safety. Each features a high-quality hardened steel blade, LED Laser Line for accuracy, and user-friendly controls. These manual and semi-automatic models are the ideal solution for transforming brochures, invitations and more with professional, accurate cutting.

Cut-True



Cut-True 13M Tabletop Manual Paper Cutter

Cutting Action:	Manual lever handle
Maximum Cutting Width:	14.5" (370mm)
Maximum Paper Stack Height:	5/8" (15mm)
LED Laser Cut Line:	Yes
Clamp Style:	Lever
Back Gauge Adjustment:	Thumbscrew
Back Gauge Reading:	Scale, in both inches (1/32") and metric (1mm)
Standard Features:	Safety covers, blade changing handles, complete tool kit for adjustments and general maintenance



Includes complete tool kit for adjustments, blade changing & general maintenance



Cut-True 15M Manual Paper Cutter

Cutting Action:	Manual lever handle
Maximum Cutting Width:	16.9" (430mm)
Maximum Paper Stack Height:	2.15" (55mm)
LED Laser Cut Line:	Yes
Clamp Style:	Spindle-guided clamping wheel
Back Gauge Adjustment:	Manual crank
Back Gauge Reading:	Scale, in both inches (1/32") and metric (1mm)
Standard Features:	Blade change safety tool, safety covers, metal stand, feet for tabletop use



Cut-True 16M Manual Paper Cutter

Cutting Action:	Manual lever handle
Maximum Cutting Width:	18.7" (475mm)
Maximum Paper Stack Height:	3.15" (80mm)
LED Laser Cut Line:	Yes
Clamp Style:	Spindle-guided clamping wheel
Back Gauge Adjustment:	Manual crank
Back Gauge Reading:	Scale, in both inches (1/32") and metric (1mm)
Standard Features:	Blade change safety tool, safety covers, metal stand, feet for tabletop use



Cut-True 22S Semi-Automatic Electric Paper Cutter

Cutting Action:	Dual-button electric
Maximum Cutting Width:	16.9" (430mm)
Maximum Paper Stack Height:	1.75" (45mm)
LED Laser Cut Line:	Yes
Clamp Style:	Spindle-guided clamping wheel
Back Gauge Adjustment:	Manual crank
Back Gauge Reading:	Digital readout, in both inches (1/32") and metric (1mm)
Standard Features:	Blade change safety tool, safety covers, safety key lock, metal stand, feet for tabletop use



Cut-True 27S Semi-Automatic Electric Paper Cutter

Cutting Action:	Dual-button electric
Maximum Cutting Width:	18.9" (480mm)
Maximum Paper Stack Height:	3.15" (80mm)
LED Laser Cut Line:	Yes
Clamp Style:	Automatic
Back Gauge Adjustment:	Manual crank
Back Gauge Reading:	Digital readout, in both inches (1/32") and metric (1mm)
Standard Features:	Blade change safety tool, safety covers, safety key lock, metal stand with storage shelf, feet for tabletop use



Available with optional wide side tables

Cut-True 29A Semi-Automatic Electric Paper Cutter

Cutting Action:	Dual-button electric
Maximum Cutting Width:	20.5" (520mm)
Maximum Paper Stack Height:	3.15" (80mm)
LED Laser Cut Line:	Yes
Programmable Jobs:	Up to 100 programs with up to 100 steps each
Length Behind Blade:	20.5" (520mm)
Length in Front of Blade:	18.25" (464mm)
Minimum Cut:	1.6" (40mm) with False Clamp, .98" (25mm) without False Clamp
Table Size:	30.75" W x 15.75" D (781x 400mm) 56" W x 15.75" D (1422 x 400mm) w/ optional wide side tables
Clamp Style:	Automatic, electronically adjustable
Back Gauge Adjustment:	Fully programmable using touchscreen, accurate to 0.1mm
Standard Features:	Touchscreen control panel, LED safety curtain, false clamp, blade change safety tool
Options:	Wide side tables



Shown with optional wide side tables

Cut-True 29H Hydraulic Paper Cutter

Cutting Action:	Dual-button hydraulic
Maximum Cutting Width:	20.5" (520mm)
Maximum Paper Stack Height:	3.15" (80mm)
LED Laser Cut Line:	Yes
Programmable Jobs:	Up to 100 programs with up to 100 steps each
Length Behind Blade:	20.5" (520mm)
Length in Front of Blade:	18.25" (464mm)
Minimum Cut:	2.36" (60mm) with False Clamp, 1.18" (30mm) without False Clamp
Table Size:	30.75" W x 15.75" D (781 x 400mm) 56" W x 15.75" D (1422 x 400mm) w/ optional wide side tables
Clamp Style:	Automatic, hydraulically adjustable
Back Gauge Adjustment:	Fully programmable using touchscreen, accurate to 0.1mm
Standard Features:	Touchscreen control panel, LED safety curtain, false clamp, blade change safety tool, foot-pedal pre-clamp
Options:	Wide side tables

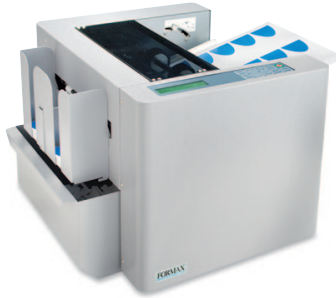
CARD CUTTERS / BOOKLET MAKER / BOOKLET FINISHER



Easily create crisp, clean business cards and more with the FD 120 and FD 125 Card Cutters. Professional-quality booklets are a snap with the FD 180 Booklet Maker. Compact, portable and easy to use, it accommodates a variety of paper sizes, folding and stapling up to 500 booklets per hour. The Formax Square IT Squareback Booklet Finisher gives your stapled booklets a professional, perfect-bound look, with the security of a stapled binding.



Professional squared bindings produced with the Square IT



FD 120 Card Cutter

Hopper Capacity:	Up to 75 sheets
Variable Speed:	Up to 130 business cards per minute
Paper Size:	8.5" W x 11" and 8.5" W x 14" L
Paper Weight:	120 - 300 gsm
Features:	Cuts full-bleed color business cards, postcards, greeting cards and photos. User-friendly control panel with LCD display, 6 programmed jobs, 6 custom jobs, paper weight adjustment for heavier stock, fine-tune adjustment
Options:	7" slitter cassette for postcards and photos, 8" slitter cassette for greeting cards, 402 Series Jogger



Shown with optional Output Conveyor Stacker

FD 125 Card Cutter

Hopper Capacity:	Up to 2" or 120 sheets (300gsm)
Variable Speed:	Up to 240 business cards per minute (12" x 18" sheets)
Cutting Tolerance:	+/- 0.2 mm
Paper Size:	Letter,* Legal,* 11" x 17", 12" x 18", 13" x 19" (*Letter and Legal size applications require custom slitter cassette FD 125-40)
Paper Weight:	120 - 300 gsm
Minimum Finished Length:	1.2" (30mm)
Output Conveyor (optional):	Up to 750 business cards
Features:	Cuts full-bleed color business cards, postcards, spec sheets, greeting cards and photos. User-friendly control panel with LCD display, 7 programmed / 6 custom jobs, paper weight adjustment for heavier stock, fine-tune adjustment, all-metal stand on casters doubles as hidden waste bin compartment, easily interchangeable optional slitter cassettes
Options:	15" conveyor stacker, 11", 5" and custom slitter cassettes, 402 Series Jogger



FD 180 Automatic Tabletop Booklet Maker

Sheet Capacity:	Staples and folds up to 15 sheets of 20# bond, for 60-page booklets
Sheet Size:	10" - 17" L x 8.25" - 12" W
Speed:	Up to 500 booklets per hour (operator-dependent)
Features:	Automatic push-button operation, six pre-set paper sizes and six programmable sizes, LCD control panel display, two automatic staplers with five stapling positions, four-digit counter, automatic paper alignment, safety interlocks, time delay feature for cycle start, heavy-duty steel construction



square IT

Square IT Squareback Booklet Finisher

Capacity:	Up to 96 pages/24 sheets of 20# bond / 80gsm
Speed:	Up to 1,800 booklets per hour
Booklet Size:	Max: 9 1/2" x 12 3/4" (240 x 325mm) Min: 4" x 4 1/2" (100 x 120mm)
Features:	Compact and rugged, operates as stand-alone or in-line with digital print devices, easy-to-use control panel with LED indicators, quiet operation, jam detection

DATA DESTRUCTION





These powerful compact models are designed for use alongside the desk or work station. They provide on-the-spot destruction of sensitive paperwork, phone messages and notes generated during the day. Ideal for use by busy professionals or for the small home office.



FD 8204CC Deskside Shredder

- Auto Start/Stop
- Heat-treated solid steel cutters require minimal oil
- Slide-out waste bin for easy removal of paper shreds
- Electric safety switch for waste bin
- Thermal overload protection
- Reverse mode
- Casters for mobility
- Accepts CDs, credit cards, staples and paper clips

Cutting Style:	Cross Cut
Shred Size:	5/32" x 1 3/8"
Sheet Capacity:	Up to 17 sheets* 20#, 1 CD or 1 credit card
Speed:	7.5 fpm
Feed Opening:	9"
Dimensions:	15" W x 12.6" D x 22.5" H
Bin Capacity:	7.1 gal.
Weight:	35 lbs.
Security Level:	DIN 66399 P-4 / O-3 / T-4 / E-4 / F-1



FD 8252CC Deskside Shredder

- Auto Start/Stop
- Reverse Mode
- Slide-out waste bin features fill-level window
- Electric safety switch for waste bin
- Thermal overload protection
- Energy-saving standby mode uses no power
- Accepts credit cards, staples and paper clips

Cutting Style:	Cross Cut
Shred Size:	5/32" x 1 3/16"
Sheet Capacity:	12 to 16* sheets, or 1 credit card
Speed:	Up to 21 fpm
Feed Opening:	9.5"
Dimensions:	15" W x 9.5" D x 22" H
Bin Capacity:	9 gal.
Weight:	28 lbs.
Security Level:	P-4



FD 8302CC / FD 8302SC Deskside Shredders

- Auto Start/Stop & Auto Reverse
- Cross-cut model features 1/16" wide micro-cut
- High-quality metal cabinet with casters
- All-metal gearing
- Heavy-duty waste bin
- Thermal overload protection
- Heat-treated steel cutters require minimal oil
- Accepts staples and paper clips
- Strip-cut model also accepts CDs and credit cards

	FD 8302CC	FD 8302SC
Cutting Style:	Cross Cut	Strip Cut
Shred Size:	1/16" x 5/8"	5/32"
Sheet Capacity:	7 to 8*	21 to 23*
Speed:	27 fpm	21 fpm
Feed Opening:	10"	10.6"
Dimensions:	16" W x 14" D x 26" H	16" W x 14" D x 30" H
Bin Capacity:	9.5 gal.	9.5 gal.
Weight:	88 lbs.	99 lbs.
Security Level:	P-5	P-2

* Sheet capacity varies depending on paper and power supply



Formax OnSite office shredders are built to the highest standards for operator convenience, safety, and reliability in a wide variety of models. Choices include a range of shred sizes, manual or automatic operation, multimedia destruction and various sized feed openings. Formax Office Shredders are designed to handle your company's sensitive and private information at the source!



OnSite Shred at the Source!

FD 8402CC / FD 8402SC Office Shredders



- LED Control Panel with load indicator
- Automatic Start/Stop, Reverse & Cleaning
- High-quality metal cabinet with casters
- All-metal gearing
- Heavy-duty waste bin
- Thermal overload protection
- Heat-treated steel cutters
- Accepts staples, paper clips & credit cards
- Energy-saving ECO Mode
- Optional EvenFlow™ Internal Oiling System



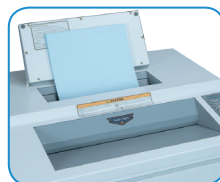
LED Control Panel

	FD 8402CC	FD 8402SC
Cutting Style:	Cross Cut	Strip Cut
Shred Size:	5/32" x 1-1/5"	1/4"
Sheet Capacity:	24 to 26*	30 to 32*
Speed:	33 fpm	30 fpm
Feed Opening:	12.2"	12.2"
Dimensions:	20" W x 20" D x 34" H	20" W x 20" D x 34" H
Bin Capacity:	28 gal.	28 gal.
Security Level:	P-4	P-2

FD 8502AF AutoFeeder



- AutoFeed Hopper
- LED Control Panel with load indicator
- Auto Start/Stop, Reverse & Cleaning
- Accepts staples, paper clips & credit cards
- Extra-wide 16" hand-feed opening
- Metal cabinet with casters
- All-metal gearing
- Heavy-duty waste bin
- Heat-treated steel cutters
- Energy-saving ECO Mode
- Optional EvenFlow™ Internal Oiling System



Cutting Style:	Cross Cut
Shred Size:	5/32" x 1-1/5"
AutoFeed Sheet Capacity:	Up to 175 sheets* up to 11" x 17"
Hand-Feed Sheet Capacity:	22 to 24
Speed:	35 fpm
Hand-Feed Opening:	16"
Dimensions:	24" W x 20" D x 35" H
Bin Capacity:	33 gal.
Security Level:	P-4

FD 8502CC/SC & FD 8602CC/SC Office Shredders



- LED Control Panel with load indicator
- Auto Start/Stop, Reverse & Cleaning
- Extra-wide 16" feed opening
- Accepts staples, paper clips & credit cards
- Metal cabinet with casters
- All-metal gearing
- Heavy-duty waste bin
- Thermal overload protection
- Heat-treated steel cutters
- Energy-saving ECO Mode
- Optional EvenFlow™ Internal Oiling System

	FD 8502CC	FD 8502SC	FD 8602CC	FD 8602SC
Cutting Style:	Cross Cut	Strip Cut	Cross Cut	Strip Cut
Shred Size:	5/32" x 1-1/5"	5/32"	5/32" x 1-1/5"	1/4"
Sheet Capacity:	23 to 25*	20 to 22*	35 to 37*	29 to 31*
Speed:	35 fpm	33 fpm	22 fpm	30 fpm
Feed Opening:	16"	16"	16"	16"
Dimensions:	24" W x 20" D x 35" H	24" W x 20" D x 35" H	24" W x 20" D x 35" H	24" W x 20" D x 35" H
Bin Capacity:	33 gal.	33 gal.	33 gal.	33 gal.
Security Level:	P-4	P-2	P-4	P-2

* Sheet capacity varies depending on paper and power supply



FD 8652CC AutoOiler

- AutoOiler integrated oiling system automatically pumps oil onto the cutting blades for optimal performance
- LED Control Panel with load indicator
- Auto Start/Stop, Reverse & Cleaning
- High-quality metal cabinet with casters
- All-metal gearing
- Thermal overload protection
- Heavy-duty waste bin
- Energy-saving ECO Mode
- Accepts staples, paper clips and credit cards
- Heat-treated steel cutters



Cutting Style:	Cross Cut
Shred Size:	5/32" x 1 19/32"
Sheet Capacity:	Up to 32 sheets*
Speed:	Up to 33 fpm
Feed Opening:	16"
Dimensions:	28" W x 24" D x 43" H
Bin Capacity:	53 gal.
Security Level:	P-4



FD 8704CC / FD 8714 Multimedia & Paper

- Dedicated multimedia feed opening shreds USB flash drives, CDs, DVDs, and mini-DV cassettes
- Dedicated paper feed opening
- Auto Start/Stop, Reverse & Cleaning
- LED Control Panel with load indicator
- High-quality metal cabinet with casters
- All-metal gearing
- Thermal overload protection
- Heavy-duty waste bin
- Heat-treated steel cutters
- Energy-saving ECO Mode
- Optional semi-automatic oiling system

	FD 8704CC	FD 8714CC
Cutting Style:	Cross Cut	Cross Cut
Shred Size:	5/32" x 1-5/8"	5/32" x 1-5/8"
Sheet Capacity:	40 to 45*	25 - 27*
Speed:	12 fpm	25 fpm
Feed Opening:	9.4"	9.4"
Dimensions:	20" W x 20" D x 36" H	24" W x 20" D x 37" H
Bin Capacity:	28 gal.	34 gal.
Security Level:	P-4	P-4

* Sheet capacity varies depending on paper and power supply



Separate Feed Opening for Multimedia Shredding



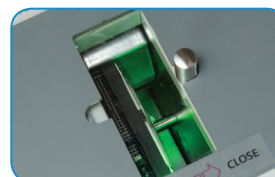
FD 87HD Hard Drive Punch

- Punching die made of hardened, nickel-plated steel
- Powerful, efficient AC geared-motor
- Heavy duty steel gears
- LED lights illuminate the punching chamber
- Transparent safety shield
- LED control panel
- Auto Stop after each cycle
- Convenient sturdy plastic waste bin
- Low-noise design
- All-metal cabinet with casters

Punch Hole Size:	.39"
Hard Drive Size:	2 1/2" or 3 1/2"
Feed Opening:	4.65"
Punching Cycle:	14 seconds
Dimensions:	19.68" W x 18.5" D x 35" H
Security Level:	H-2 (DIN 66399 standard)



Easy-to-use drop-in slot



See the process



Visible damage = added security



Formax High Security Office Shredders have been evaluated by NSA and meet the requirements of NSA/CSS specification 02-01 for Level P-7 High Security cross-cut paper shredders. These high security shredders are ideal for highly confidential documents and integrate all of the commercial-grade features found on our Office models.



FD 8730HS High Security Paper & Optical Media

- Meets NSA requirements for Level P-7 high security paper shredding and optical media destruction
- Dual feed openings: one for paper, one for media
- Shreds paper, CDs, DVDs and credit cards
- LED Control Panel with load indicator
- Auto Start/Stop, Reverse & Cleaning
- EvenFlow™ Internal Automatic Oiling System
- Two separate heavy-duty waste bins
- High-quality metal cabinet with casters
- All-metal gearing
- Thermal overload protection
- Energy-saving ECO Mode
- Heat-treated steel cutters

Cutting Style:	Cross Cut	Cross Cut
Shred Size:	1/32" x 3/16"	1/16" x 5/32"
Feed Capacity:	14 to 15 sheets*	1 CD
1-Hour NSA	19 reams /	
Durability Test:	feeding 8 sheets	
Speed:	23 fpm	2,000 CDs per hour
Feed Opening:	9 3/8"	4 7/8"
Dimensions:	28" W x 24" D x 43" H	
Bin Capacity:	31 gal.	18.5 gal.
Security Level:	P-7	O-5



Separate Feed Openings for Paper and Optical Media



Separate Waste Bins for Paper and Optical Media



FD 8650HS AutoOiler High Security

- Meets NSA Level P-7 high security requirements
- EvenFlow™ Internal Automatic Oiling System
- LED Control Panel with load indicator
- Auto Start/Stop, Auto Reverse & Auto Cleaning
- High-quality metal cabinet with casters
- Extra-wide 16" feed opening
- All-metal gearing
- Heavy-duty waste bin
- Thermal overload protection
- Heat-treated steel cutters
- Energy-saving ECO Mode
- Shreds paper only, no staples or paper clips

Cutting Style:	Cross Cut
Shred Size:	1/32" x 3/16"
Sheet Capacity:	14 to 15*
1-Hour NSA Durability Test:	18 reams / feeding 8 sheets
Speed:	24 fpm
Feed Opening:	16"
Dimensions:	28" W x 24" D x 43" H
Bin Capacity:	53 gal.
Security Level:	P-7



FD 8300HS / FD 8400HS-1 / FD 8500HS High Security

- Meets NSA Level P-7 high security requirements
- LED Control Panel with load indicator
- Auto Start/Stop, Reverse & Cleaning
- High-quality metal cabinet with casters
- FD 8500HS has extra-wide 16" feed opening
- All-metal gearing
- Heavy-duty waste bin
- Thermal overload protection
- Heat-treated steel cutters
- Shred paper only, no staples or paper clips
- Energy-saving ECO Mode
- EvenFlow™ integrated oiling system: Standard on FD 8400HS-1, optional for FD 8300HS / 8500HS

	FD 8300HS	FD 8700HS-1	FD 8500HS
Cutting Style:	Cross Cut	Cross Cut	Cross Cut
Shred Size:	1/32" x 3/16"	1/32" x 3/16"	1/32" x 3/16"
Sheet Capacity:	6 to 8*	7 to 8*	6 to 7*
1-Hour NSA Durability Test:	6 reams / feeding 3 sheets	10 reams / feeding 5 sheets	10 reams / feeding 4 sheets
Speed:	23 fpm	23 fpm	35 fpm
Feed Opening:	9.5"	10.25"	16"
Dimensions:	18" W x 19" D x 26" H	20" W x 20" D x 34" H	24" W x 20" D x 35" H
Bin Capacity:	15 gal.	28 gal.	33 gal.
Security Level:	P-7	P-7	P-7

* Sheet capacity varies depending on paper and power supply



FD 8850CC Industrial Hopper Shredder

- Shreds paper, stacks of computer forms, credit cards, CDs/DVDs, magnetic disks, USB flash drives, and even crumpled paper
- Two separate infeeds for flexibility
- Rotating bin accepts crumpled paper directly from a desk waste basket
- EvenFlow™ Automatic Oiling System keeps blades in peak condition
- Auto Start/Stop, Reverse
- LED Control Panel
- Mobile waste bin on casters
- Pull-out shelf for easy loading
- Thermal overload protection



Rotating upper hopper accepts crumpled paper directly from a desk waste bin

Cutting Style:	Cross Cut
Shred Size:	1/8" x 2"
Sheet Capacity:	70 - 80 sheets*
Speed:	46 fpm
Feed Opening:	17.5"
Dimensions:	36" W x 28" D x 63" H
Bin Capacity:	77 gal.
Weight:	490 lbs.
Security Level:	P-4



FD 8806CC

FD 8806CC / FD 8804SC Industrial Conveyor Shredders

- LED Control Panel with load indicator
- High-volume conveyor-fed for centralized shredding
- Auto Start/Stop, Reverse & Cleaning
- Front waste bin access allows placement against a wall
- Shred entire files, stacks of computer forms, cardboard, CDs
- Large safety bar to stop operation
- Key lock for maximum safety control
- Thermal overload protection
- Heat-treated solid steel cutting blades
- Rugged waste bin on casters for easy emptying
- EvenFlow™ Integrated Automatic Oiling System

	FD 8806CC	FD 8804SC
Cutting Style:	Cross Cut	Strip Cut
Shred Size:	1/4" x 2"	1/2"
Sheet Capacity:	75 to 90 *	105 to 125 *
Speed:	Up to 40 fpm	Up to 50 fpm
Feed Opening:	16"	16"
Dimensions:	31" W x 54" L x 43.5" H	31" W x 53" L x 51" H
Bin Capacity:	36 gal.	49 gal.
Weight:	661 lbs.	727 lbs.
Security Level:	P-3	P-1



LED Control Panel with Load Indicator, safety key lock and emergency stop



FD 8906CC

FD 8906CC Industrial Conveyor Shredders

- Conveyor models for high-volume shredding
- FD 8906B Shredder and Baler System compacts shredded material into a bale
- Front waste bin access allows the FD 8906CC to be placed against a wall
- Dual-compartment waste bin and reusable nylon bags
- Shred up to 650 sheets at once
- LED Control Panel with indicator, and safety key lock
- Auto Start/Stop, Reverse & Cleaning
- Shred entire files, stacks of computer forms, tapes, cardboard, CDs, & magnetic disks
- EvenFlow™ Automatic Internal Oiling System
- Large safety bar to stop operation
- Thermal overload protection
- Heat-treated solid steel cutting blades
- Customized shredding blades available
- Optional Rear Output Conveyor for FD 8906CC

	FD 8906CC	FD 8906B with Baler
Cutting Style:	Cross Cut	Cross Cut
Shred Size:	5/16" x 1-1/2" - 3"	5/16" x 1-1/2" - 3"
Sheet Capacity:	Up to 650 *	Up to 650 *
Speed:	Up to 35 fpm	Up to 35 fpm
Feed Opening:	21"	21"
Dimensions:	47" W x 81" L x 63" H	47" W x 129" L x 63" H
Bin Capacity:	102 gal.	n/a
Baler Capacity:	n/a	154 gal. bale
Baler Pressure:	n/a	80.8 kN
Bale Size:	n/a	31" W x 22" L x 19" H
Bale Weight:	n/a	110-154 lbs. (material dependent)
Weight:	1,984 lbs.	3,086 lbs.
Security Level:	P-3	P-3



LED Control Panel with Load Indicator, safety key lock and emergency stop

* Sheet capacity varies depending on paper and power supply

Intuitive LED control panel with load indicator to help prevent jams

Lifetime guaranteed high-density molded plastic waste bins

Commercial-grade all-metal gears drive the cutting heads

Energy-saving ECO Mode goes into standby after 5 minutes of inactivity

Powerful, durable AC geared motors, built to outlast the competition

Integrated EvenFlow™ Oiling System keeps blades operating at peak performance

Security Levels (DIN 66 399-1 Standards)

Strip Cut Paper Security Levels

	P-1	P-2	P-3
DIN 66 399-1	≤ 2000mm ² Width ≤ 12mm	≤ 800mm ² Width ≤ 6mm	≤ 320mm ² Width ≤ 2mm

Cross Cut Paper Security Levels

	P-3	P-4	P-5	P-6	P-7
DIN 66 399-1	≤ 320mm ² Width ≤ 2mm	≤ 160mm ² Width ≤ 6mm	≤ 30mm ² Width ≤ 2mm	≤ 10mm ² Width ≤ 1mm	≤ 5mm ² Width ≤ 1mm

Formax Data Destruction Warranty

- Lifetime limited warranty on Deskside & Office cross-cut and strip-cut cutting heads
- 1-year warranty on High Security cutting heads
- 1-year warranty on all other parts

Formax agrees to repair or replace, at its option, any defective part or component covered by this warranty, provided there was no abuse and we first receive written notice of a defect within the applicable warranty period. This warranty extends only to the original purchaser and does not include labor or the payment of any labor charges or incidental or consequential expenses. Warranty claims must be submitted with a replacement part order. All parts are shipped FOB Dover, NH.



FORMAX[®]

www.formax.com

Corporate Office, Sales & Service
Dover, New Hampshire • USA

Manufacturing Facility
Turlock, California • USA

January 2017